

**Empowering young people and students to realise their potential**

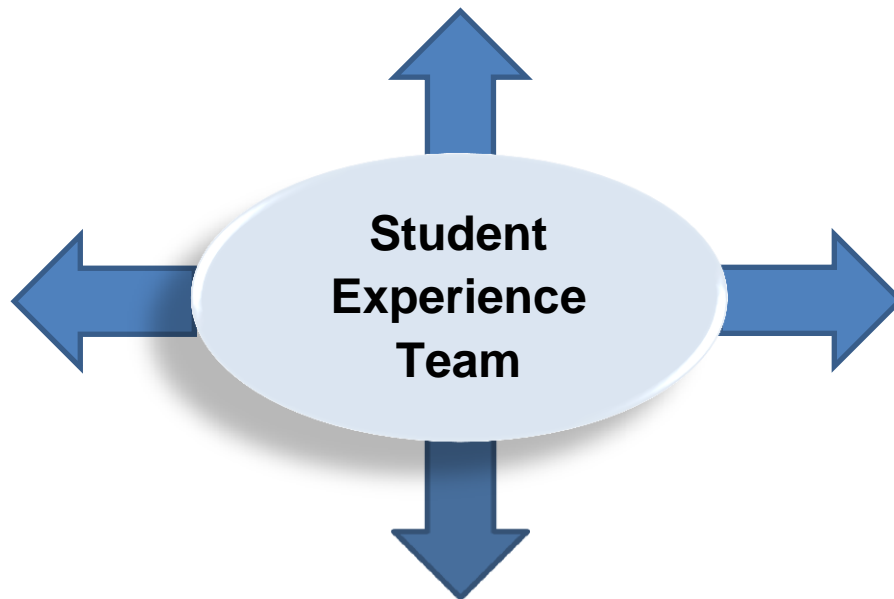
Meeting the diverse needs of **Schools**

Engaging with the **decision-making** structure at City

**Supporting each other**

**Working collaboratively** with colleagues and stakeholders

Engaging with the **external environment**



**Evidence** based development of institutional strategy, policy, procedures and services

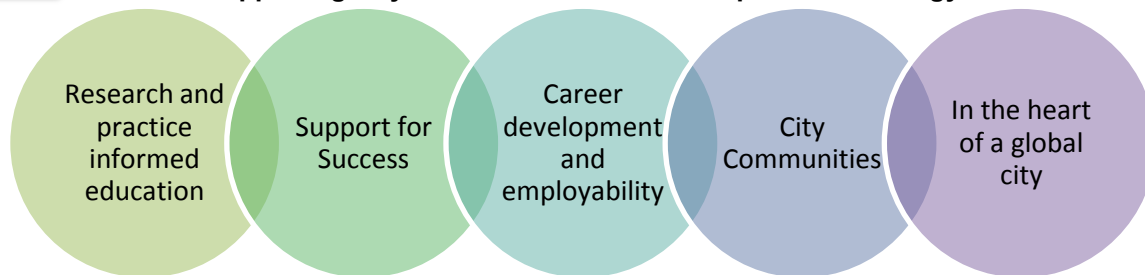
Delivery of **specialist services**

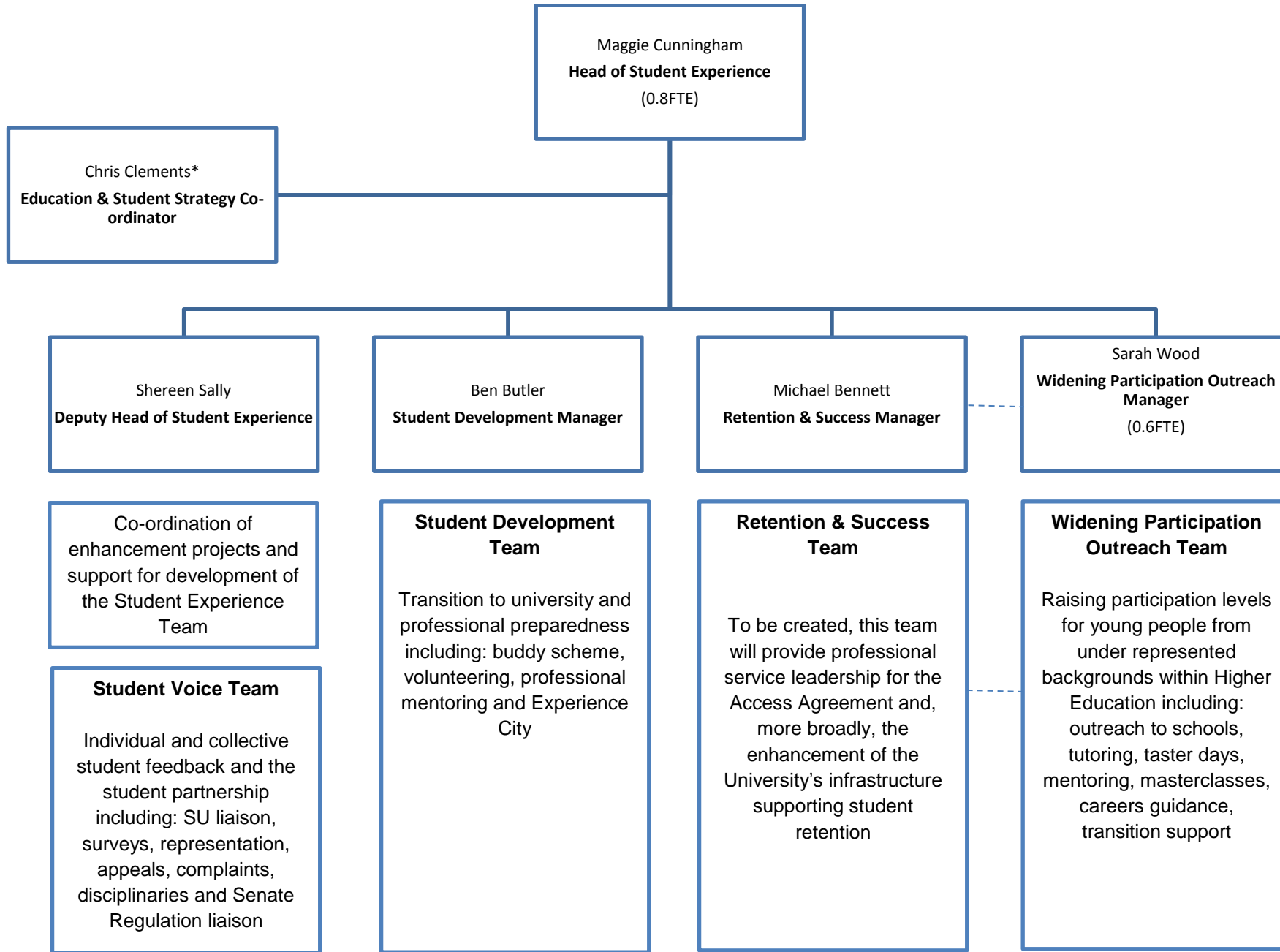
**Co-ordination** of activities within Schools and professional services

Working in **partnership with young people and students** to improve their experience

Supporting City's **partnership with the Students' Union**

**Supporting City's Education & Student Experience Strategy**





Shared leadership and responsibilities for some activities -----

\*Maternity cover for Anika Bloomfield