



CITY UNIVERSITY
LONDON

Academic excellence for business and the professions



International Student Guide

World class higher education
in the heart of London



Londinium was
founded by the
Romans in

AD43.

Welcome to City University London

City University London is a global University committed to academic excellence, with a focus on business and the professions and an enviable central London location.

We are in the top 5% of universities in the world according to the *Times Higher Education World University Rankings 2011/12* and in the top 30 UK universities according to the *Times Higher Education Table of Tables (2011)*. We are ranked in the top 12 in the UK for graduate starting salaries (*The Sunday Times University Guide 2012*) and fifteen of our subject areas were identified as undertaking world-leading or internationally-excellent research in the last Research Assessment Exercise. Our academic range is broadly-based with world-leading strengths in business, law, engineering, mathematical sciences, informatics, the arts (including journalism and music), social sciences and health sciences.

Studying at City will allow you to learn and socialise with students from more than 150 countries and a broad range of cultures and backgrounds. With one of the highest proportions of international students and staff, we are proud to be a global community.

Of course, there is more to University than the lecture theatre, laboratory and studio. As a City student you will live in one of the world's most exciting and cosmopolitan cities with all its attendant cultural, sporting and social opportunities. You will be stimulated, challenged and fulfilled by London and the clubs, sports and societies available at City.

Being a City student is a unique, once-in-a-lifetime experience that we look forward to sharing with you.



Prof. Paul Curran
Vice-Chancellor



In 2012, London
will become the

only city

in the world to have
hosted the Olympic
Games three times.

Why study at City?



London is the

**biggest
city in
Europe.**

Choosing the right university for you is one of the most important decisions you will make.

To help you, here are six reasons that make City special.

1. We are a University with a reputation for academic excellence. Our staff and students are actively involved in pioneering research. In the Government's latest Research Assessment Exercise (RAE), our research in fifteen areas was rated by expert panels as amongst the best in the world.
 2. We offer exceptional employment prospects by having strong links with business and the professions and we are ranked 12th in the UK for graduate starting salaries. (*The Sunday Times University Guide 2012*).
 3. We are located in the heart of central London, close to the capital's leading financial, legal, media and medical institutions. Both professionally and personally, you will have the opportunity to benefit from all that London has to offer.
 4. We are an international university. Our student population is drawn from over 150 different countries, helping to create a lively, cosmopolitan atmosphere.
 5. We are committed to supporting you in your education and your life in London. City recently won the coveted *Times Higher Education* Leadership and Management Award for Outstanding Student Services Team in 2011.
 6. We are in the top 5% of global universities according to *Times Higher Education World University Rankings 2011/2* and in the top 30 higher education institutions in the UK according to the *Times Higher Education Table of Tables 2011*.
-

Academic excellence and research

Up-to-the-minute research informs our teaching at all levels, which means our students benefit from the latest thinking.

City's research excellence dates back over 100 years. During this period we have made significant contributions across a number of social, economic, cultural and professional areas.

We are proud to have amongst our staff world-renowned academics, across disciplines ranging from engineering, informatics and social sciences through to health, business, law, music and the arts.

Our academics are drawn from around the world and the ideas developed through their research also extend beyond national boundaries, offering the potential for influence and impact on local and distant communities, commercial enterprises and society at large. City University London is co-ordinating the World Cities World Class (WC2) University network which brings together top academic institutions with the aim of collaboration in education and research as well as exchange of students and staff.

We achieved great success in the 2008 UK Research Assessment Exercise (RAE). As we prepare for the Research Excellence Framework (REF) in 2014, our attention is focused on maintaining our track record for excellence in research, whilst also finding efficient ways to demonstrate the societal value of our research and its impact on business, industry, public policy and the professions.

City has a long tradition of bringing thought leaders and influencers onto campus to share their insight and debate important issues with students. For more information on our forthcoming events visit:

www.city.ac.uk/whatson.

Doctoral students make a significant contribution to the quality of our research environment and we are seeking to increase the number of high-calibre students enrolled on a research degree within the University. We offer several fully-funded doctoral studentships each year and welcome applications from well qualified students whose research interests match those of our academic staff.

For more information visit www.city.ac.uk/research/research-degrees.



Nearly
a third
of all the UK's
archives are in London.

Central London location

Unlike many universities which claim to be near London, we're right in the heart of it.

City University London is next to the City of London, one of the world's leading financial centres, from which the University takes its name. The Square Mile, as it is also known, is home to the headquarters of many financial and professional institutions, the Inns of Court, major arts complexes and media offices, teaching hospitals and specialist medical research centres.



London life

Social London

London has a nightlife which is famous the world over. On any night of the week you will find a range of events, many of which are free or discounted for students. The University is located in Clerkenwell, close to a wide range of bars, restaurants, clubs and gig venues to suit every taste and budget.

Business London

London is the major international hub for many industries – finance, creative, media, the list is seemingly endless. The University's location, and its links to the City of London dating back to its very foundation, make it the perfect place not only to study, but to build networks which will carry you through your career.

Cultural London

City's location is close to countless famous landmarks, including St Paul's Cathedral and the River Thames. Big Ben and the Houses of Parliament, Buckingham Palace, Tower Bridge, the Tower of London, Trafalgar Square, Piccadilly Circus and Covent Garden are all easily accessible by public transport.

London on a budget

There are many ways to enjoy the city on a student budget. Sightseeing and entry to many museums is free and shops, cinemas and theatres often offer student discounts. Students can also benefit from discounts on travel within London and substantial reductions on national travel.

If that isn't enough, London is a gateway to many other great cities in Britain and beyond, such as Amsterdam, Paris, Edinburgh and Dublin.

See page 28 for maps and transport links.

USEFUL LINKS:

www.timeout.com/london
www.visitlondon.co.uk

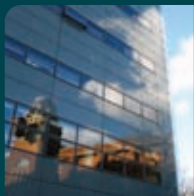


There are more than
32,000
music performances
a year in London –
621 a week, 17% of
which are free.



Visit one of London's
22 top
museums.

Tradition and heritage



London's first Lord
Mayor was appointed in

1189.

City's tradition of providing high quality education relevant to business and the professions dates back 160 years. For many of our graduates, time spent at City laid the groundwork for leadership, innovation and excellence that have changed the world we live in.

The University can trace its foundations back to the Inns of Court School of Law, established in 1852 and now a part of The City Law School. St Bartholomew's College of Nursing, now part of the School of Health Sciences, was founded in 1877. Almost 20 years later, the Northampton Institute was opened on the site that is now the University's main campus. With the objective of promoting 'the industrial skill, general knowledge, health and wellbeing of young men and women belonging to the poorer classes', the first departments established in the Institute were Mechanical Engineering and Metal Trades, Artistic Crafts for Industry, Applied Physics and Electrical Engineering, Horology, Electro-chemistry and Domestic Economy.

During the early twentieth century, the Northampton Institute played a key part in London life: the University Great Hall hosted the boxing competition of the first London Olympic Games in 1908 and after the First World War, the Institute participated in schemes to retrain wounded ex-servicemen. In 1927, the Department of Optometry and Visual Sciences was founded, and the Northampton Institute became one of the first establishments in the world to educate optometrists.

In 1957, the Northampton Institute became the Northampton College of Advanced Technology, a name that reflected its expertise in the sciences, engineering and computing and its close links with industry and the professions. Less than ten years later, in 1966, the Northampton College was granted a Royal Charter to become a University. The Lord Mayor of London became the University's Chancellor, an arrangement that continues to this day.

Since gaining university status in 1966, City University London has come a long way: the University remains focused on providing academic excellence for business and the professions and it is now ranked in the top five percent of universities in the world by the *Times Higher Education World University Rankings*.

A British experience and an international experience

With over 21,000 students from over 150 countries and teaching staff drawn from nearly 50 countries, City University London has a truly international outlook.

For international students coming to City, this represents the opportunity to meet and work with people from all over the world.

London itself is a hugely diverse city, with just about every nationality and culture represented.

The University's international team makes regular visits to many countries around the world, telling prospective students about City. For information on when we will be visiting your country, please visit www.city.ac.uk/international.

Our vision is to be celebrated as London's premier University for professional policy, practice and applied research, dedicated to preparing students for global careers, and working with global practitioners, research and educational partners.

It is estimated that one in four of today's British graduates will work in global organisations or an international environment. City is already well positioned to educate students to work in internationalised labour markets, professions and organisations that must increasingly adapt to cross-border professional practice. Our teaching and learning are informed by a commitment to fundamental and applied research, and our learning, teaching, research and professional practice are supported by engagement with global companies and international institutions.

In March 2012 the University approved an ambitious Strategic Plan, which will strengthen City's position as a leading global University committed to academic excellence, focused on business and the professions and located in the heart of London.



1 in 4

Londoners were
born outside the UK.

Outstanding employment prospects



The Economist
Intelligence Unit
ranked London as the

second

most competitive city in
the world.

(March 2012).

The main reason that most students enter higher education is to improve their career prospects and it is in this area that City University London has its strongest track record.

The University is ranked 12th in the UK for graduate starting salaries in *The Sunday Times University Guide 2012*.

City has close relationships with many professional institutions and businesses, both at home and abroad and its industry connections feed directly into its teaching and research. This enables City to provide courses which are not only relevant to business today, but are also highly sought after by students and their prospective employers.



Career and Skills Development Service

At the heart of our track record for employability is the Career and Skills Development Service, which can offer careers advice and guidance while you are studying to help you make informed, realistic decisions about your future career. Graduates of City University London can use the service for up to three years after graduation.

Through the Career and Skills Development Service, you can:

- Speak to careers consultants and gain insight into the current labour market, as well as develop strategies for achieving your career goals
- Talk through your ideas, concerns and issues either in a short drop-in session or in a more in-depth guidance interview
- Take part in specific activities, such as workshops and seminars, to help with your job search, applications and other career-related opportunities
- Go on a guided tour of the University and get advice on the best way to make use of the extensive resources available, both in the Centre and online
- Get information on employer vacancies, recruitment processes, training courses, presentations and occupational information.

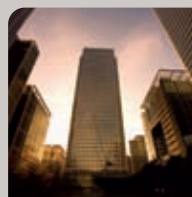
Our careers staff are in regular contact with a large number of local, national and international employers, professional associations, City *alumni* and other agencies. Employers contribute to specific seminars on self-marketing techniques, effective job application, cv preparation and interview skills. They also regularly hold and attend on-campus career fairs to meet with our students and discuss their recruitment procedures.

The Career and Skills Development Service can also offer assistance to students looking for work, whether part or full-time, paid or voluntary either during or after your time at City.

More information can be found at www.city.ac.uk/careers.



There are more branches and subsidiaries of
international banks
in London than in any other city in the world.



A third of the
world's largest
companies are head-quartered in London.

Unparalleled links with industry

City University London prides itself on its extensive links with industry, fostered through the courses it offers and accredits, visiting lecturers, career events and recruiters.



Excellent services for students

Support for international students

City University London has dedicated International Student Advisors based in the Student Centre who are available to offer advice and assistance to all international students who are studying, or thinking of studying at the University.

- Comprehensive pre-arrival information is published on the University website, giving you guidance on everything from setting up a bank account to UK immigration regulations
- Special welcome events for international students at the beginning of term as well as induction and orientation sessions, are organised by Schools and Departments
- The Students' Union has a range of international student societies that hold social events throughout the year.

For information, contact:
T: +44 (0)20 7040 7040
E: visaadvice@city.ac.uk

Student Centre

If you need extra support while you are at City – whether it's related to your learning, your health or your finances – chances are you will be able to access it through our award-winning Student Centre.

The Student Centre can offer you information and help on a whole range of matters and should be your first point of contact for:

- General enquiries
- Financial support
- Housing
- International student support
- Disability services
- Dyslexia support
- Payment of fees
- Academic learning support
- University ID cards
- Student mental health and wellbeing support
- Student appeals and complaints.

The Student Centre Advisors can also provide information and advice on other University services and events, including:

- Course registration procedures
- E-learning and CitySpace
- University libraries and computing services
- Graduation ceremonies.

As a student at City University London you will have access to our extensive range of facilities including:

- Computing services
- Sports centre
- Students' Union
- Libraries
- Student Centre
- Student employment service
- Study skills support
- Personal tutor system
- Health services
- Support and welfare services
- Disability services
- Chaplaincy service and presence of Imam.

State-of-the-art facilities



London's

395

public libraries stock
17 million books.

At City University London you will benefit from world-class facilities, including classrooms fitted with new state-of-the-art equipment, high-tech teaching rooms and laboratories, as well as wi-fi internet access throughout the University.

The University continually invests to improve its facilities in response to students' needs. Over the past three years, this has included:

- State-of-the-art multimedia studios and digital newsrooms in the Department of Journalism
- New performance areas and rehearsal rooms for the Music Department
- The Saad Centre for Radiography which boasts equipment equivalent to any training hospital
- A Student Centre bringing together a comprehensive range of support services for all students.

Libraries

We have libraries at four sites which hold 350,000 volumes of books between them. The printed collections are augmented by our portfolio of over 25,000 journal titles available to access electronically, on and off campus. Specialist databases will help you find your way around a range of electronic resources designed to support your research and study. Our library staff work closely with each School to develop services and collections which help students locate, access and evaluate resources. Library facilities include:

- 1,100 study spaces and bookable rooms
- Self-service loans and returns plus online renewal and reservations
- 24-hour automated telephone renewal service
- Computer workstations
- Photocopying and print facilities
- Access schemes to other libraries in the Higher Education sector.

IT services

Today, IT is an integral part of study and at City, we make sure students have access to the latest computing facilities. Once you have started at City, you will have your own IT account, so you can use any of our 1,100 PCs across the University. Alternatively wireless hotspots provide students with free internet access when working at the main site. You will also have your own University email address, web space and backed-up file storage.

E-learning environment

City students have access to a Virtual Learning Environment, which is part of a much wider Strategic Learning Environment initiative used to enhance the education and learning experience. You will have instant access to your course materials, resources, interactive activities, assessment and communication tools from any computer at any time.

We also offer invaluable online training in research skills.

Personal development planning

Our online portfolio, PebblePad, enables you to record and progress your personal development, thereby increasing your future employment skills.

Supervision

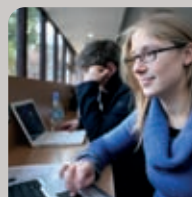
Our staff have expertise in a number of specialist areas relating to learning, teaching and educational technology. They are able to supervise dissertation projects, as well as contribute to questionnaires and interviews.

Other IT facilities include:

- Students in our halls of residence will be provided with network connectivity, for a small one-off fee, providing access to the internet as well as City's network services
- Three 24-hour PC labs
- A3, A4, colour, black and white and transparency printing.

In addition to our IT services we also have the following audio-visual facilities available for student loan at no cost: digital video cameras; microphones; tripods; data projectors; MP3 recorders and cassette tape recorders.

All our IT/Audio Visual services are underpinned by a high-quality cross-skilled IT/AV support team.

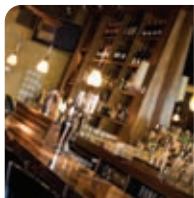


London has over

20,000

public WiFi hotspots,
with the number
growing every day.

The Students' Union



London has over

6,000

restaurants and
some 30,000 shops.

The Students' Union provides independent representation of students' views and concerns to the University in order to continually improve the quality of the student experience.

In addition, a range of recreation facilities, welfare support and commercial services help to see students successfully through university life and beyond. With over 50 clubs and societies on offer, you are bound to find something that is of interest at City's Students' Union.

The Students' Union venue, Saddler's, is a multi-functional social space – during the day, it is a place to meet friends, eat, chat, surf the web or relax between lectures. In the evening, the venue becomes a vibrant social space that hosts a range of events from televised sporting events to fashion shows and quizzes. You can even reserve a table or an area within the venue for your own functions.

Although the membership to the Students' Union is free, for a small charge you can purchase an National Union of Students Extra card that entitles you to a range of student discounts at shops and venues throughout the UK.

To find out more about what's on offer at the Students' Union, visit www.city.ac.uk/studentsunion. We look forward to meeting you.

Sports activities

As you would expect in such a large and diverse city, the range of entertainment and sports activities are endless. London boasts six Premier League football teams, two first class international cricket grounds, is the home of Rugby Union and of course, Wembley Stadium.

You can also take part in sports activities organised by City's student clubs. The sub-aqua and canoe clubs meet at local centres and the sailing club uses facilities at the Queen Mary Sailing Club. The rugby club shares facilities with the Honourable Artillery Company in Moorgate, and the hockey, football, basketball, cheerleading, tennis, cricket and netball clubs have use of facilities throughout north London.

City sports clubs offer sport for all, so whatever your level, from beginner through to accomplished sportsman or woman, City sports will welcome you.

A strong *alumni* network

By embarking on a course at City University London, you will be starting a lifelong association with the University.

Once you have graduated, you will be eligible to join the City University London *Alumni* Network, a worldwide network of over 100,000 former students from over 100 countries, many of whom are working as leaders in their fields. Keep in touch with them and the University through the City University London *Alumni* Network.

Active membership of this network (which is free to join) can be beneficial to you at all stages of your professional career after leaving City. In addition to networking opportunities, reunions and social events, you will also receive a bi-monthly e-bulletin and an annual magazine to ensure that you remain connected and informed of the latest developments at City University London.

Alumni contribute to the life of the University in many ways. They maintain a voice in the affairs of the University by becoming representatives on the University Court and the *Alumni* Association Board. Often graduates offer valuable advice during course reviews and help with future recruitment. City's *alumni* also play a vital role in the continuing development of the University through their financial contributions to the *Alumni* Fund.

There is no fee for membership of the *Alumni* Network but there are excellent benefits. These include:

- Careers advice
- Regular news updates
- Invitations to events
- Access to over 40 international City *alumni* groups
- Discounts which include the library and facilities hire.

For more information about the *Alumni* Network log onto www.city.ac.uk/alumni or call +44 (0)20 7040 5557.



**Over one
third**
of London's workforce
has a degree.

One University, seven centres of excellence



City University London offers a large range of quality courses giving our students the chance to develop specialist knowledge in their chosen area of study and allowing studies to be tailored to specific interests. For a full list of courses offered by each of the Schools please visit the website listed or contact the International Office.

School of Arts

www.city.ac.uk/arts

Undergraduate

BA Creative Industries

BA Journalism

BA Journalism and a Social Science
(Economics, Psychology, Sociology)

BMus Music

Postgraduate

MA Audiovisual Translation

MA Broadcast / Television Journalism

MA Creative Writing (Nonfiction)

MA Creative Writing (Novels)

MA Creative Writing (Playwriting and Screenwriting)

MA Culture, Policy and Management Pathways Programme

MA/MSc Electronic Publishing

MA Financial Journalism

MA Interactive Journalism

MA International Journalism

MA International Publishing Studies

MA Investigative Journalism

MA Journalism, Media and Globalisation

MA Magazine Journalism

MA Music

MA Newspaper Journalism

MA Political Journalism

MA Publishing Studies

MA Science Journalism

MA Translating Popular Culture

Pg Cert Translation Skills

Cass Business School

www.cass.city.ac.uk

Undergraduate

BSc Accounting and Finance

BSc Actuarial Science

BSc Investment and Financial Risk Management

BSc Banking and International Finance

BSc Management

BSc Business Studies

Postgraduate

MBA

Executive MBA

Executive MBA (Dubai)

MSc Actuarial Management

MSc Actuarial Science

MSc Banking and International Finance

MSc/PgDip Charity Accounting and Financial Management

MSc/PgDip Charity Marketing and Fundraising

MSc Corporate Finance

MSc Energy, Trade and Finance

MSc Finance

MSc Finance and Investment

MSc Financial Mathematics

MSc Grantmaking, Philanthropy and Social Investment

MSc Insurance and Risk Management

MSc International Accounting and Finance

MSc Investment Management

MSc Management

MSc Mathematical Trading and Finance

MSc/PgDip NGO Management

MSc Quantitative Finance

MSc Real Estate

MSc Real Estate Investment

MSc Shipping, Trade and Finance

MSc Supply Chain, Trade and Finance

MSc Voluntary Sector Management

School of Informatics

www.city.ac.uk/informatics

Undergraduate

BSc Business Computing Systems

BSc Computer Science

BSc Computer Science with Artificial Intelligence

BSc Computer Science with Games Technology

BSc Information Systems

BSc Software Engineering

Postgraduate

MSc Business Systems Analysis and Design

MSc Computer Games Technology

MSc e-Business Systems

MA/MSc Electronic Publishing

MSc Health Informatics

MSc Human Centred Systems

Master of Information Leadership

MSc Information Management

MA/MSc Information Management in the Cultural Sector

MSc Information Science

MSc Information Security and Risk

MSc Information Systems and Technology

MA/MInnov/MSc Innovation, Creativity and Leadership

MA/MSc Library Science

MSc Social Media

MSc Software Engineering

The City Law School

www.city.ac.uk/law

Undergraduate

Law

Postgraduate

Bar Professional Training Course

LLM Civil Litigation and Dispute Resolution

LLM Criminal Litigation

LLM EU Commercial Law

LLM International Banking and Finance

LLM International Commercial Law

MJur International Commercial Law

LLM International Competition Law

LLM International Energy Litigation

Graduate Diploma in Law

Graduate Entry LLB

Legal Practice Course

LLM Maritime Law

LLM Maritime Law (Greece)

LLM Professional Legal Practice

LLM Professional Legal Skills

LLM Public International Law

School of Health Sciences

www.city.ac.uk/health

Undergraduate

BSc Human Communication

BSc Midwifery

BSc Nursing – Adult/Children/Mental Health

Foundation Degree in Ophthalmic Dispensing

BSc Optometry

BSc Professional Practice

BSc Public Health

BSc Radiography (Diagnostic Imaging)

BSc Radiography (Radiotherapy and Oncology)

BSc Specialist Community Public Health Nurse
(Health Visiting)

BSc Speech and Language Therapy

Postgraduate

MSc Clinical Optometry

MSc Food Policy

MSc Food and Nutrition Policy

MSc Health Management in Strategic Management
and Leadership

MSc Human Communication

MSc Joint Professional Practice - Language and Com-
munication

MSc Medical Ultrasound

MSc Midwifery

MSc Nuclear Medicine Technology

MSc Nursing

MSc Radiography – Computed Tomography

MSc Radiography – Diagnostic Imaging

MSc Radiography – Medical Magnetic Resonance

MSc Radiography – Radiotherapy

MSc Speech and Language Therapy

School of Engineering & Mathematical Sciences

www.city.ac.uk/engineering-maths

Undergraduate	Postgraduate
BEng/MEng Aeronautical Engineering	MSc Air Safety Management
BEng Air Transport Engineering	MSc Air Transport Management
BSc Air Transport Operations with ATPL	MSc Aircraft Maintenance Management
BEng/MEng Automotive & Motor Sport Engineering	MSc Analysis and Design of Structures for Fire, Blasts and Earthquakes
BEng Biomedical Engineering	MSc Automotive Engineering
BEng/MEng Civil Engineering	MSc Civil Engineering Structures
BEng/MEng Civil Engineering with Architecture	MSc Clinical Engineering with Healthcare Technology Management
BEng/MEng Civil Engineering with Surveying	MSc Construction Management
BEng Computer Systems Engineering	MSc Energy and Environmental Technology and Economics
BEng/MEng Electrical & Electronic Engineering	MSc Maritime Operations and Management
BEng/MEng Energy Engineering	MSc Mechanical Engineering
BEng Engineering with Management & Entrepreneurship	MSc Power Systems and Energy Management
BSc/MMath Mathematical Science	MSc Professional Engineering (Civil Engineering)
BSc/MMath Mathematical Science with Computer Science	MSc Project Management, Finance and Risk
BSc/MMath Mathematical Science with Finance and Economics	MSc Signals and Sensor Systems
BSc/MMath Mathematical Science with Statistics	MSc Systems and Control
BSc/MMath Mathematics and Finance	MSc Telecommunications and Networks
BEng/MEng Mechanical Engineering	MSc Transport Strategy and Systems
BEng Telecommunications	

School of Social Sciences

www.city.ac.uk/sciences

Undergraduate

BSc Criminology and Sociology

BSc Economics

BSc Economics and Accountancy

BSc Financial Economics

BSc International Politics

BSc International Politics and Sociology

BSc Media Studies and Sociology

BSc Psychology

BSc Sociology

BSc Sociology with Psychology

Postgraduate

MSc Business Economics/International
Business Economics

MSc Criminology and Criminal Justice

GradCert Counselling Psychology

MSc/DPsych Counselling Psychology

MSc Development Economics

MSc Economic Evaluation in Healthcare

MSc Economic Regulation and Competition

MSc Economics

MA Global Migration

MA Global Political Economy

MSc Health Economics

MSc Health Psychology/Psychology and Health

MA Human Rights

MSc International Business Psychology

MA International Communications and Development

MA International Politics

MA International Politics and Human Rights

MA Media and Communications

MSc Organisational Psychology/Organisational Behaviour

MA Political Communication

MSc Research Methods and Psychology

MA Social Media

MSc Social Research Methods

MA Sociology

MA Transnational Media and Globalisation

Pre-sessional English

As City University London's courses are taught in English, proof of competency in English is a requirement for admission. Details are given as part of course entry requirements (see courses pages on our website).

Full-time pre-sessional courses in English are run during the summer. These are delivered though the University's joint venture INTO City University London.

The INTO City University London centre is based in a building close to Liverpool Street Station (a short bus ride from City University London), and provides high quality teaching programmes underpinned by excellent student support services. Pre-sessional

courses are available as 4, 8 and 12 week programmes, and run from late June to early September – depending on language level and degree programme offer requirements.

INTO City University London's Pre-sessional English is accepted by all Schools and courses at City, with the exception of Cass Business School. However, for students holding unconditional offers from Cass, the courses may still be helpful for additional language preparation.

For more information, please go to www.city.ac.uk/international/international-students/pre-sessional-english.

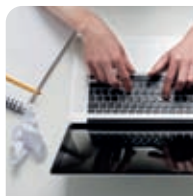


**Over
300**

languages are currently
spoken in London.



Foundation programmes



Around half a

million

people in London are employed in the creative industries sector.

City University London has a number of successful partnership arrangements offering preparatory courses for international students seeking entry to undergraduate degrees. These courses may offer a guarantee of entry to a specific degree at City provided that students achieve the grades required to proceed.

These foundation and preparatory courses are offered in nearby partner colleges/centres. While studying on these courses, students have the benefit of full University membership and access to a range of student services.

INTO City University London

Together with INTO University Partnerships, the University has established a purpose-built study centre near to Liverpool Street Station in the heart of London's financial district. As a student enrolling at INTO City, you are effectively a City student and so will have full access to City University London's facilities. Courses at INTO City

are validated by the University, which provides assurance of the quality and standards of education.

INTO City courses provide academic preparation for first year undergraduate entry and ensure you meet the English language requirements for your chosen degree. Successful completion of the International Foundation programme guarantees entry to City University London. For more information please visit: www.into.uk.com/city.

Kaplan International College (KIC), London

The University works in partnership with KIC London to provide Foundation courses for international students. Located between London's financial district and the University, KIC London offers comprehensive support including regular one-to-one tuition. Progression to the University is guaranteed if you complete their KIC London course at the required level (subject to limited places at Cass Business School). For more information please visit: www.kiclondon.org.uk.

David Game College

David Game College is an independent Sixth Form College based in London's famous Notting Hill. They offer a one year international foundation programme which is recognised by City, as well as A and AS Levels. For more information, please visit: www.davidgamecollege.com.

Bellerby's College

Bellerby's College has bases in London, Brighton, Cambridge and Oxford, and offers a one year international foundation programme which is recognised by City, as well as A and AS levels. For more information, please visit: www.bellerbys.com.

Other preparatory courses are accepted on an individual basis.

Applying

• Education Background

These courses are intended for students who are studying in the education systems of other countries that are not recognised for direct entry to a degree at City University London. Normally, students should be achieving good grades in their own education system to be considered for a place on any of the courses listed above. Contact the relevant foundation course provider if you have queries regarding your qualifications.

• Language qualifications

If your first language is not English, you must provide evidence of your English language ability. You would need to obtain IELTS of 5.0 or 5.5. Please check the websites for the most up-to-date information.

How to apply

For further guidance on making an application to a foundation programme please visit: www.city.ac.uk/international/international-students/international-foundation-programmes.

Accommodation and living

[www.city.ac.uk/
accommodation](http://www.city.ac.uk/accommodation)

Halls of Residence

City offers a range of managed halls of residences which are all a short walk or bus ride from the University. All bedrooms are well equipped and have internet access and telephone. En-suite bathrooms are available in some rooms. For international undergraduates, accommodation is guaranteed provided you apply before the annual deadline. For postgraduates, priority is given to overseas students. Please visit www.city.ac.uk/accommodation for more information.



Private accommodation

The cost of accommodation in London varies considerably. As a guide, a single room with shared bathroom and cooking facilities costs from £95 per week, and a self-contained flat for two people costs from £250 per week. Weekly rent does not usually include heating and electricity bills. The University's accommodation office can provide students with advice when searching for private accommodation.

Scholarships

Most international students fund their studies privately, however aside from City's scholarships, there is other funding available for international students. The best source of information is the British Council which lets you search for funding through its scholarship search database. The Council will also provide information and advice about the cost of living in the UK. For more information, please visit: www.educationuk.org www.britishcouncil.org

City awards some scholarships based on academic merit. For up-to-date information on available scholarships visit: www.city.ac.uk/studentcentre/support/scholarships.

Cost of living

While studying at City you will need to budget for accommodation, books, food, study materials, travel and your social life. We estimate that you will need £9,000 – £16,000 per year to meet the basic expenses excluding tuition. Suggested weekly expenses are:

	University	Private
Accommodation	£102–£191	£90–£150
Fuel (water, electricity, gas)	Included	£17
Travel	£0–£10	£0–£40
Study materials	£12	£12
Entertainment	£45	£45
Food	£35	£35
Others	£20	£20
Total	£214–£313	£219–£319

One-off costs

Initial costs (bedding, clothes, etc.): £150 – £300
Ongoing occasional costs: £300
Books: £150 – £250

Useful websites:

www.ukvisas.gov.uk
www.studylondon.ac.uk
www.direct.gov.uk

Visa requirements

Students are responsible for obtaining any necessary visas and entry clearance into the UK. You are advised to prepare well in advance for a UK visa application. You can find out more about visas at www.ukvisas.gov.uk.



Applying

Undergraduate



.....
www.ucas.com
.....

Education background

Contact the relevant school admissions office or email international@city.ac.uk if you have queries regarding your qualifications and your application for a course at City University London. Entry onto courses here at City is very competitive and you are advised to apply early.

How to apply

Applications to undergraduate degree courses should be made through UCAS (Universities and Colleges Admissions Service). You can apply through the UCAS website www.ucas.com.

When to apply

Applications should arrive at UCAS between 1 September and 15 January (for EU applicants); the final deadline for non-EU international applicants is 30 June of the year you wish to commence studies. However, we would strongly recommend that international students apply as early as possible.

Competition for places on many courses is very strong and these may be fully subscribed well before 30 June.

Language qualifications

If your first language is not English, you must provide evidence of your English language ability. The requirements vary from course to course. Please check the website www.city.ac.uk/study for up-to-date information.

Postgraduate

Education background

Applicants for postgraduate degrees should normally hold an honours degree from a recognised University or an equivalent qualification. Applicants with suitable experience and professional qualifications may also be considered. To find out whether your qualifications are suitable, contact the department directly or email international@city.ac.uk. Some courses require specific professional experience and/or further qualifications.

How to apply

Postgraduate applications should be made directly to City University London. Applications can be made online; the link to the online application process can be accessed on the web page for each course. Please note that some professional courses have a separate admissions process, please see our website for more information. Alternatively, application packs can be obtained from the department in which you are interested.

When to apply

The closing date for taught courses is determined by the department concerned and may be as early as February for a course starting in September. Competition for places on many courses is very strong and these may be fully subscribed well before the official closing date. You should contact the department that offers the course you are interested in to ensure they still have vacancies. However, we would firmly recommend that international students apply as early as possible.

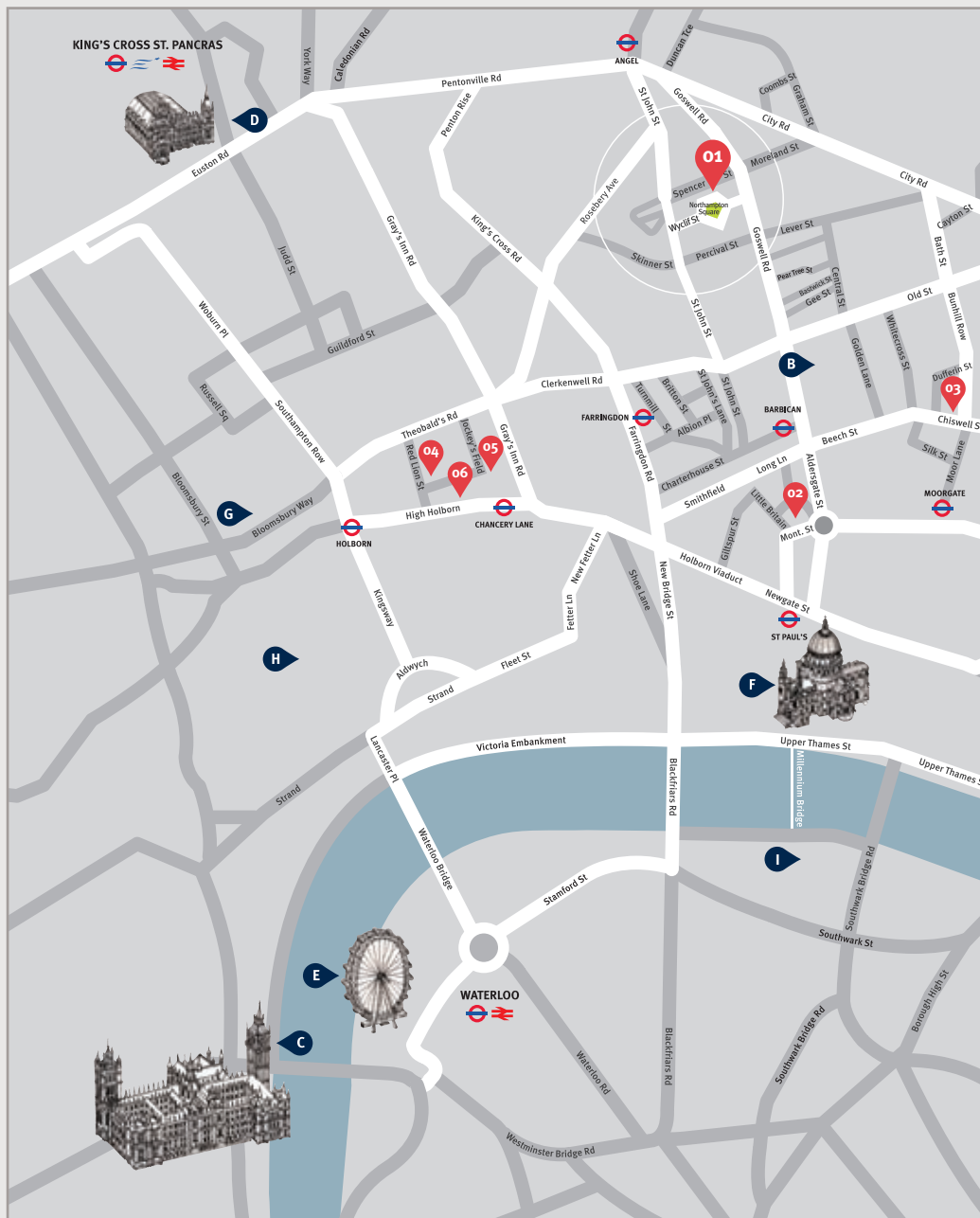
Language qualifications

If your first language is not English, you must provide evidence of your English language ability. The requirements vary from course to course. Please check the website www.city.ac.uk/study for up-to-date information.

Research

Whether it is blue-sky research, research into policy, or action research linked to professional development programmes, it is happening at City and is at the heart of University activity. For more information visit: www.city.ac.uk/research.

London sites map





Main City University London campus sites

- 01** Northampton Square Campus
- 02** School of Community & Health Sciences (West Smithfield site)
- 03** Cass Business School
- 04** 2–10 Princeton Street (The City Law School)
- 05** 2 Atkin Building (The City Law School)
- 06** 4 Gray's Inn Place (The City Law School)
- 07** INTO Centre

London landmarks

- A** The Gherkin
- B** The Barbican Centre
- C** Houses of Parliament
- D** St. Pancras Station
- E** The London Eye
- F** St. Paul's Cathedral
- G** British Museum
- H** Covent Garden
- I** Tate Modern

Transport options



London Underground
Tube Station



National Rail
Overground Station



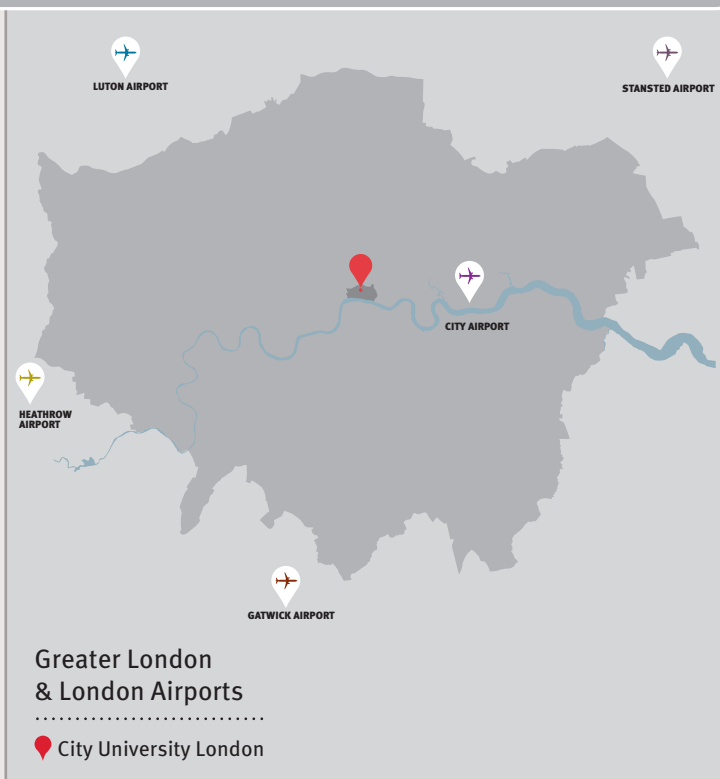
Eurostar International



Main Route to City
University London



London Airports



The International Office at City University London assists international students in all elements of the application process. We have a dedicated team of International Officers who frequently travel to attend education fairs, make presentations and undertake counselling sessions. We also have a network of representatives or agents around the world who can assist you in your country if needed. For more information on the International Office and its activities, please visit www.city.ac.uk/international.

International Office

City University London
Northampton Square
London EC1V 0HB
United Kingdom

T: +44 (0)20 7040 8019
E: international@city.ac.uk
www.city.ac.uk/international